



**DENNIS
GROUP**

The Premier Planning, Design,
Engineering and Construction
Management Firm for the
Food & Beverage Industry



#1

Food and Beverage
Design Firm
in the United States

Engineering News Record, 2015 & 2016

\$500MM
Average annual
construction value

80%

Work generated from
repeat clients — we
build business through
successful partnerships

22 Years

Average food and
beverage experience of
our project managers,
providing clients
with a highly skilled,
knowledgeable team

Serving the Food & Beverage Industry for 30 years

Dennis Group offers complete planning, design, architecture, engineering, process design and construction management services exclusively to the food and beverage industries. We are experts in the design and construction of a wide array of food and beverage facilities.

Over the last 30 years, we have built a team with deep knowledge of the intricacies, challenges and needs of food manufacturers. We work as a true partner with our clients to understand their business objectives and create a solution that delivers the best result. As a full-service firm with all necessary disciplines in-house, we are uniquely structured to put forth an efficient and effective project team.

Our proven project methodology delivers safely executed, high-quality, value-oriented, purpose-built facilities with a resolute focus on food safety. The goal is a positive project experience for all parties — the client, Dennis Group, contractors and vendors.



HIGH QUALITY



EXCEPTIONAL VALUE



TIMELY DELIVERY



RESPONSIVE SERVICE

Food Safety

Our expertise in sanitary design and food safety is unparalleled among engineering firms. Adherence to HACCP and SQF principles is at the forefront of all of our projects and we routinely assist with food safety management plans to identify, reduce and mitigate hazards in order to maintain a safe food supply. During the preliminary design phase; personnel, waste and product movements are analyzed to ensure critical adjacencies are maintained and effective control measures are in place to avoid cross-contamination. We can help your facility ensure GFSI-approved scheme standards and FSMA requirements are met or exceeded.

\$10MM

Average Cost

Direct cost of a food recall, not including lost sales or loss in consumer confidence

Recall Execution Effectiveness: Collaborative Approaches to Improving Consumer Safety and Confidence, Deloitte on behalf of the Food Marketing Institute ("FMI"), the Grocery Manufacturers Association ("GMA"), and GS1 U.S., June 2010

Job Site Safety

The protection of our clients, subcontractors, employees and the general public is of utmost importance to our firm, and our commitment to safety is reflected in how we manage projects. Dennis Group takes a proactive approach to preventing accidents through a vetted pre-qualification process of all contractors, tight controls on the work site and strict adherence to all OSHA safety regulations. Routine and random site and equipment inspections keep safety procedures top-of-mind for all involved.

89%

Lower OSHA recordable incident rate than national average, while executing **1.5 million hours of work annually**

Sustainability

As a company, we are committed to sustainable design, aligning our projects with the principles of the Triple Bottom Line principle: Economic Prosperity, Environmental Stewardship and Social Responsibility. The nature of food processing demands a high level of energy and water consumption. Therefore, our efforts are strongly aimed at improving the efficiency of production processes. We continuously develop design strategies for efficient refrigeration and heat recovery systems, insulated building envelopes, sustainable waste management and improved indoor environmental quality. Our Sustainability Coordinators are also able to assist with all aspects of LEED certification.

\$1.5MM

Average Annual Rebates Obtained on Behalf of Clients




Single-Source Supplier with In-House Expertise

We are a single-source supplier with all necessary disciplines in-house to support a project from conception through start-up. Our full-time, non-contract staff include architects, engineers (civil, structural, electrical, environmental, mechanical, process, production, packaging, industrial, controls and automation), system modeling, as well as project managers and construction managers. Dennis Group offers the following services:

- | | |
|---|--|
|  Master Planning & Logistics |  Automation, Controls Design & Integration |
|  Site & Facility Design |  Project Management & Construction Management |
|  Site Search & Selection |  Environmental Systems Design |
|  Packaging Systems |  Commissioning & Start-Up |
|  System Modeling |  USDA/FDA/PMO Compliance |
|  Process & Production |  Sustainability & LEED |
|  HACCP & SQF Systems | |

Top Talent is the Secret to Our Success
Engineers Comprise MORE THAN 65% OF OUR STAFF



Building Successful Partnerships by Delivering Results

From executing projects internally to working with a general contractor to selecting an engineering partner — you have a lot of choices. Below are a few of the reasons why countless food and beverage processors have forged long-term relationships with us.

Food & Beverage Expertise

Our sole focus on food and beverage translates into a breadth and depth of experience that is unparalleled. Over three decades, we've performed 4,000+ food projects that range from studies to full design-build greenfields. There is not a single unit operation we have not handled in food manufacturing.

Process-Centric

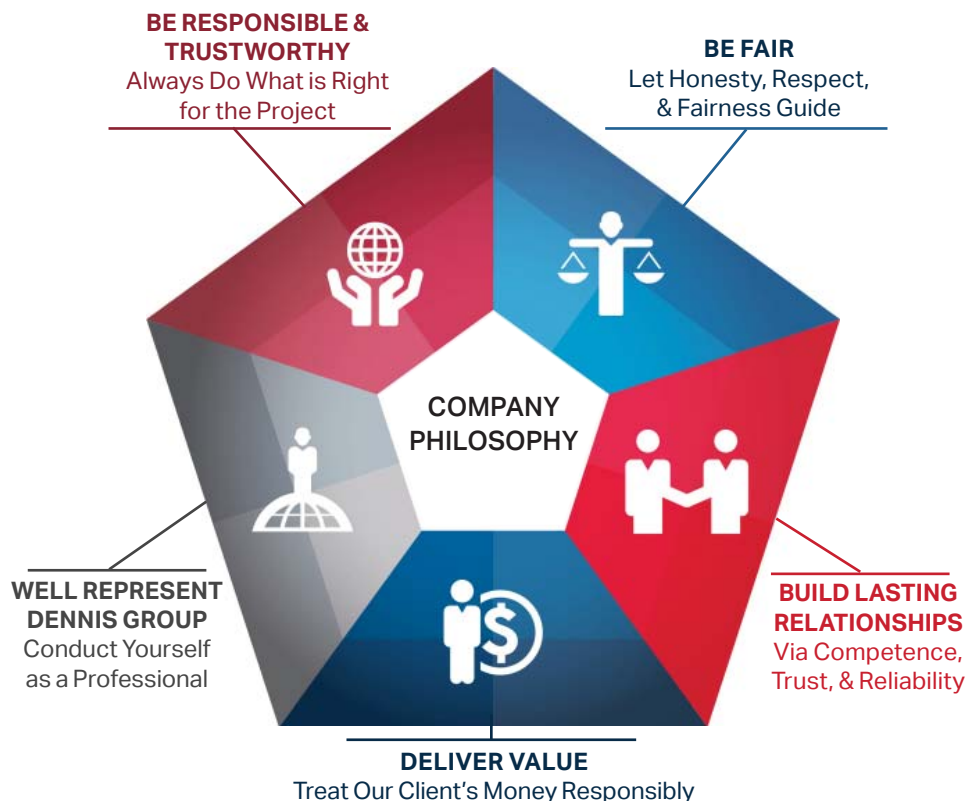
Dennis Group at its core is a process design firm and one third of our engineering staff is dedicated to this area. As such, all disciplines in our firm approach a project from the inside-out, considering the core mission of your facility – to produce safe, quality food.

Single-Source Project-Oriented Structure

With all necessary disciplines in-house to execute a project from planning through start-up, we are able to execute fast-track projects more efficiently. Additionally, our structure is flat and project-oriented, with staff following their work into the field.

Objectivity

Dennis Group does not self-perform any work. Nor do we have exclusive agreements with any vendor or equipment supplier. Our sole obligation is to our clients. This completely unbiased approach to procurement helps us deliver the best solution for the best price.



Awards and Accolades

Food Plant of the Year Awards



- Dole, Soledad, CA
- Dole, Springfield, OH
- Maple Leaf, Roanoke, VA
- Dreyer's, Bakersfield, CA
- Sabra, Chesterfield, VA

LEED Certified Projects



- Sabra (Certified as Silver twice and Gold)
- The J.M. Smucker Company
- Pepperidge Farm
- Ahold
- Agrana Fruit US

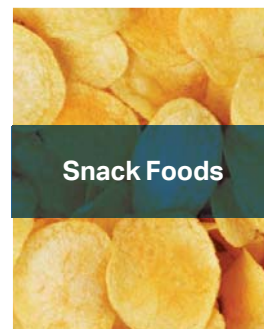
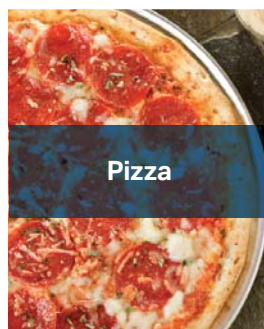
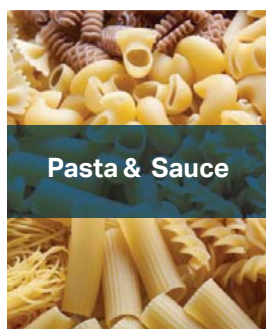
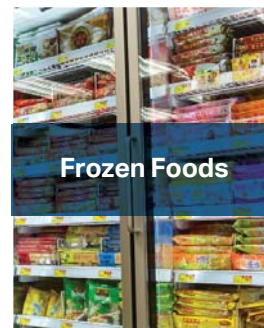
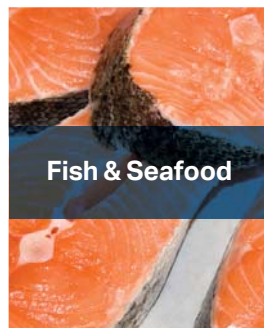
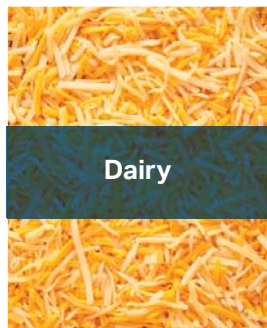
Other Awards

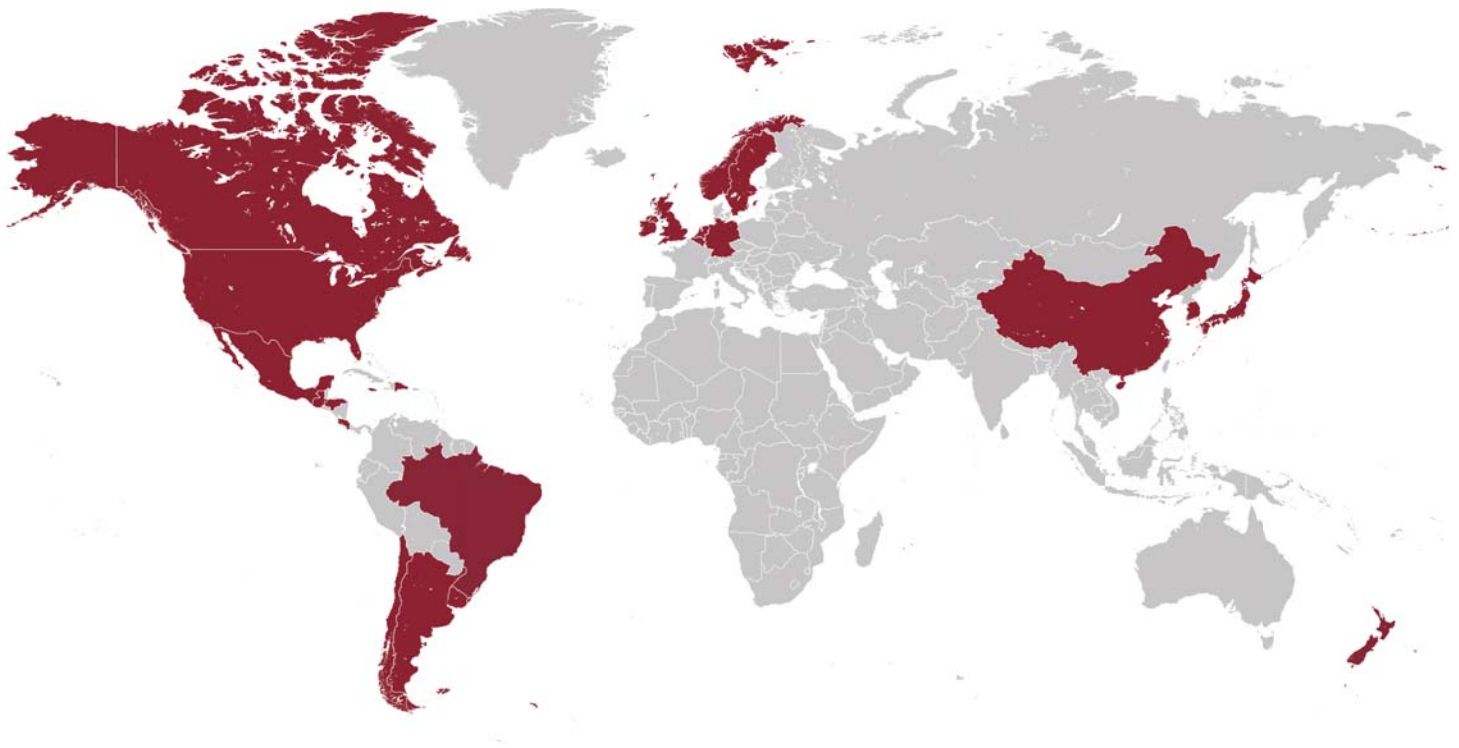


- Diageo, President's Award
- Diageo, 10 Years of Safety Award
- Dannon, Supplier of the Year Finalist
- Dannon, Integrator of the Year (two-time winner)
- Ocean Spray, Supplier of the Year
- MOM Brands Company and Campbell's Stockpot Soup, Food Engineering's Fabulous Food Plant

Areas of Expertise

Over the past three decades, we have seen every kind of process, and methods learned in one sector often translate into innovations in another.





National and International Reach

We service both small private clients as well as some of the largest food and beverage companies in the world through six offices located in Springfield, Massachusetts; Atlanta, Georgia; Salt Lake City, Utah; San Diego, California; São Paulo, Brazil; and Toronto, Canada.

Our clients are primarily based in North America, South America and Europe, although we have experience in entering and executing projects in additional markets.

DENNIS GROUP

Start the Discussion

Tell us a little about your business goals and upcoming capital plans or projects. We'll connect you with a senior member of our staff with experience in your segment to explore how we may assist.

SPRINGFIELD, MA
413.787.1785

ATLANTA, GA
678.327.0000

SALT LAKE CITY, UT
801.531.8585

SAN DIEGO, CA
858.847.9633

info@dennisgrp.com | dennisgrp.com